

# CERTIFICATE OF LOCATION OF GOVERNMENT CORNER

EAST QUARTER Corner of Section 12, Township 106, Range 39, 5TH P.M.

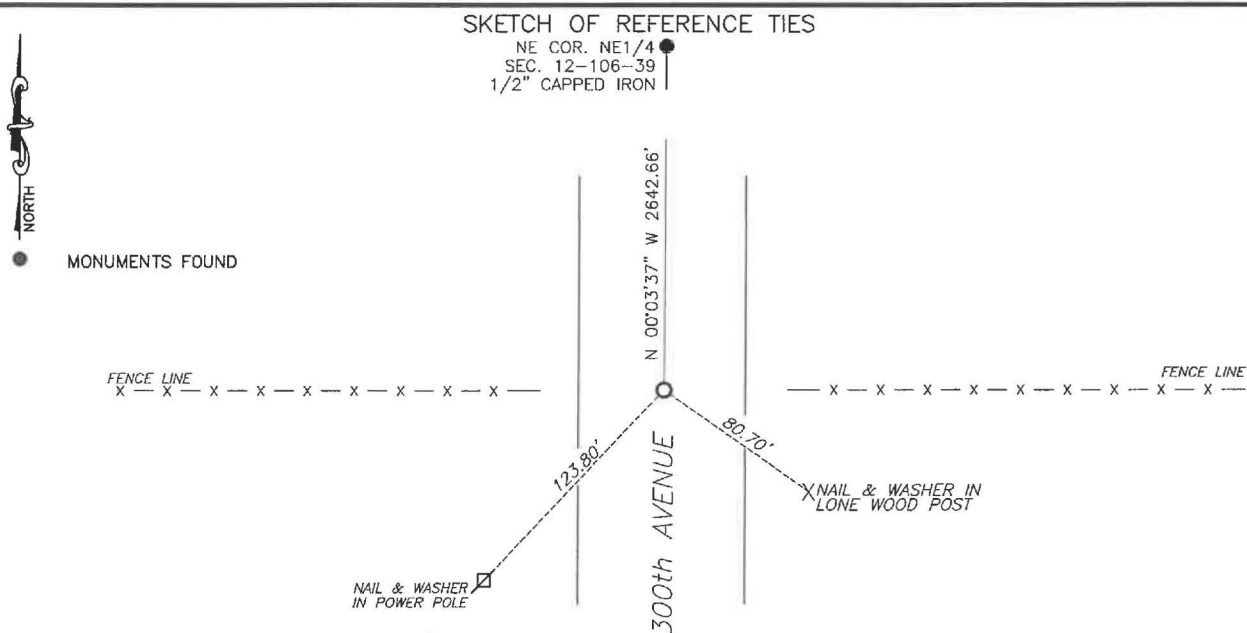
STATE OF MINNESOTA, County of Murray

At the corner location shown on the sketch:

☒ On 7/23/2024 found a 2"x4" iron shaft down 2.5 feet below road surface  
DATE

☒ left monument as found, ☐ lowered monument, ☐ removed monument (explain)

☒ On 1/16/2025 placed a 5/8" iron with seal #43844 over top of 2"x4" iron shaft.  
DATE



Murray County  
Coordinate System NAD83 (1996)

N: 155617.507  
E: 580072.096

WGS84  
LAT: 44°00'00.7537"  
LON: -95°27'44.6261"

Statement of evidence relative to this corner location is on back of page.

I hereby certify that this document and the data contained herein was prepared by me or under my direct supervision.

Daniel L. Buettel  
Daniel L. Buettel  
License No. 43844

3/12/2025  
DATE

MAR 13 2025

Karen Boorn  
MURRAY COUNTY RECORDER

Statement of Evidence

EAST QUARTER CORNER SECTION 12, T106N, R39W of the 5th P.M.

In September 1858, W.J. Neely surveyed the east township line.

In July of 1861, J.W. Myers surveyed the north, south, and west township lines.

In August of 1861, Wellman & Smoot subdivided the township.

A survey on June 22, 1899 by J.W. Woolstencroft shows a stone for the monument.

On July 23, 2024 Bueltel-Moseng Land Surveying found a  $\frac{5}{8}$ " rebar at the corner, removed and dug with a backhoe. Found a 2"x4" iron shaft down 2.5 feet below the road surface. Accepted 2"x4" iron shaft as the monument. It fell in line with fence line to the west and 2 feet west of centerline.

Returned on January 16, 2025 and set a  $\frac{5}{8}$ " iron with seal #43844 over top of the 2"x4" iron shaft.